

## PAN-ATLANTIC UNIVERSITY SCHOOL OF SCIENCE AND TECHNOLOGY (SST)

**T**he School of Science and Technology (SST) is a community of people committed to creating and transmitting knowledge and competencies in science, engineering and technology by “forming competent and socially responsible science and engineering professionals who are committed to the promotion of the common good of society and the advancement of the scientific and engineering profession.

To achieve this mission, the School seeks to:

- Provide practice-based, student-centered, and industry-relevant programmes that address technical expertise, industrial management, and ethical responsibility;
- Develop partnerships and engage with relevant stakeholders through applied research that provides solutions to industry problems;
- Provide entrepreneurship education along with science and engineering education.

### OTHER SST UNDERGRADUATE COURSES

- B.Sc. in Computer Science
- B.Eng. in Electrical/Electronic Engineering
- B.Eng. in Mechanical Engineering



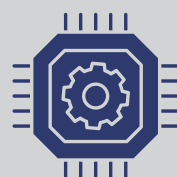
### B.Sc. Data Science

The program is designed to equip students with the foundations, methods, implications of Data Science using theories from Mathematics, Statistics, Computing Sciences, and UI/UX designs essentials.



### B.Sc. Software Engineering

The programme provides an intensive practical and theoretical course which prepares students to work in the modern-day industries. Students will learn Human-Computer interactions, Computer vision and Image processing, Master Web, Mobile and Blockchain Development amongst others.



### B.Eng. Mechatronics

Delve into the world of systems and processes that involve a synergistic integration of mechanical (such as hydraulics and pneumatics), electronic (sensors and communication), electrical engineering (control), computing, robotics and information technology with a B.Eng in Mechatronics at Pan-Atlantic University.

# ADMISSION REQUIREMENTS

## B.Sc. Data Science

### O' Level Requirements

Credit level passes in at least five subjects (in not more than two sittings) at 'O' level in a nationally recognized examination including:

- Mathematics
- English Language
- Physics

with any two (2) subjects from Computer Studies, Chemistry, Biology, Economics, Geography, Data Processing, ICT, Technical Drawing.

### UTME Requirements

- Current PAU-Approved cut-off mark
- The required UTME subjects are English Language, Mathematics, Physics and any one of Biology, Computer Studies, Economics, Geography, Technical Drawing, Chemistry

**4** DURATION  
years

### Direct Entry

In addition to 'O' level requirements, candidates must have one of the following qualifications:

- Minimum of two 'A' level passes in relevant subjects.
- International Baccalaureate Diploma (IB) in relevant subjects.
- NCE with merit in a relevant discipline.
- An OND/HND credit level in a relevant discipline.

## B.Sc. Software Engineering

### O' Level Requirements

Credit level passes in at least five subjects (in not more than two sittings) at 'O' level in a nationally recognized examination including:

- Mathematics
- English Language
- Physics

with any two (2) subjects from Computer Studies, Chemistry, Biology, Economics, Geography, Data Processing, ICT, Technical Drawing.

### UTME Requirements

- Current PAU-Approved cut-off mark
- The required UTME subjects are English Language, Mathematics, Physics and any one of Biology, Computer Studies, Economics, Geography, Technical Drawing, Chemistry

**4** DURATION  
years

### Direct Entry

In addition to 'O' level requirements, candidates must have one of the following qualifications:

- Minimum of two 'A' level passes in relevant subjects.
- International Baccalaureate Diploma (IB) in relevant subjects.
- NCE with merit in a relevant discipline.
- An OND/HND credit level in a relevant discipline.

## B.Eng. Mechatronics

### O' Level Requirements

Credit level passes in at least five subjects (in not more than two sittings) at 'O' level in a nationally recognized examination including:

- Mathematics
- English Language
- Physics
- Chemistry

and any other acceptable science subject. It is desirable for candidates to pass Further Mathematics and Technical Drawing at credit level. Such candidates shall have an added advantage.

### UTME Requirements

- Current PAU-Approved cut-off mark
- The required UTME subjects are English, Mathematics, Physics and Chemistry.

**5** DURATION  
years

### Direct Entry

In addition to 'O' level requirements, candidates must have one of the following qualifications:

- Minimum of two 'A' level passes in relevant subjects.
- International Baccalaureate Diploma (IB) in relevant subjects.
- NCE with merit in a relevant discipline.
- An OND/HND credit level in a relevant discipline.



## CAREERS

### DATA SCIENCE

- Data journalist
- Data analyst
- Statistical analyst
- Computer systems analyst
- Database administrator
- Business intelligence analyst
- Machine learning engineer
- Data architect
- Application architect

### SOFTWARE ENGINEERING

- Applications developer
- Cyber security analyst
- Game developer
- Information systems manager
- IT consultant
- Multimedia programmer
- Web developer
- Web designer
- Software engineer

### MECHATRONICS

- Robotics engineer
- Robotics technician
- Automation engineer
- Control system designer
- Electronics design engineer
- Mechanical design engineer
- Instrumentation engineer
- Software engineer

*Choose the course that's right for you!*

## MORE INFORMATION

### PAU ADMISSIONS OFFICE

Ndidi - 0708 864 1465, David - 0701 782 5427  
Joy - 08164820228, Lekan - 08135551765  
Pan-Atlantic University (Main Campus),  
Km 52 Lekki-Epe Expressway, Ibeju-Lekki, Lagos.  
Tel: 234-1-712 1728; 440 5524 (ext 240)  
E mail: [admissions@pau.edu.ng](mailto:admissions@pau.edu.ng)  
[www.pau.edu.ng](http://www.pau.edu.ng)

REGISTER ONLINE  
[apply.pau.edu.ng](http://apply.pau.edu.ng)  
or  
[www.pau.edu.ng](http://www.pau.edu.ng)

APPLY  
NOW